

YOUR GUIDE TO INSTALLING PPD (GreyConn)



Supreme Technology & Engineering
Performance Driven

v1.1 – 9/21/2012



Contact Us:
Sales@GETSTE.COM

2000-2002 AUDI B5 A4/S4/RS4
2000-2004 AUDI C5 A6/RS6/All Road

Dear Customer,

Thank you for purchasing your very own PPD unit.
We are confident your driving experience will never
be the same.

Sincerely,

the STE Team

Legal Disclaimer



Our products are intended for off-road use only. Local laws may prohibit the use of our products on your vehicle. Modifying your vehicle does not come without risk, and we cannot be held responsible for damage you incur while doing so. Everything is at your own risk. Please read and understand all directions before attempting to install our product.

Should any of our products fail, you may return them within the first fourteen (14) days for a full refund. All original packaging must be included and the product must be in like-new condition. Should the product fail beyond that point, it is warranted for one (1) year, during which time STE will repair or replace, at our discretion, any product found to be defective. Shipping costs related to returning the unit to STE are the responsibility of the customer.

This disclaimer may be amended at our discretion, at any time, and without notice.

Getting Started- TOOL LIST

Philips Screw Driver
Torx T20 socket
VAG-COM/VCDS [Required to alter coding off instrument cluster]
Flathead screwdriver
8 mm, 10 mm sockets and ratchet
4' 1/8" Vacuum line
A small rag or a piece of cloth (protect interior during install)

- No cutting wires required

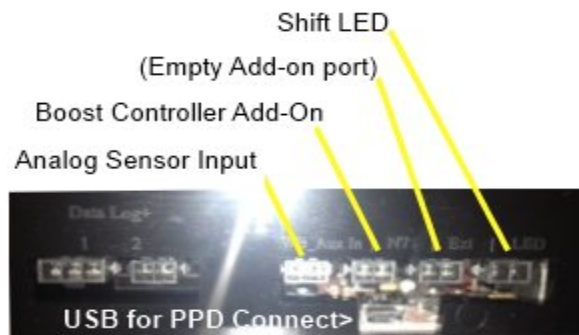


Base unit contents

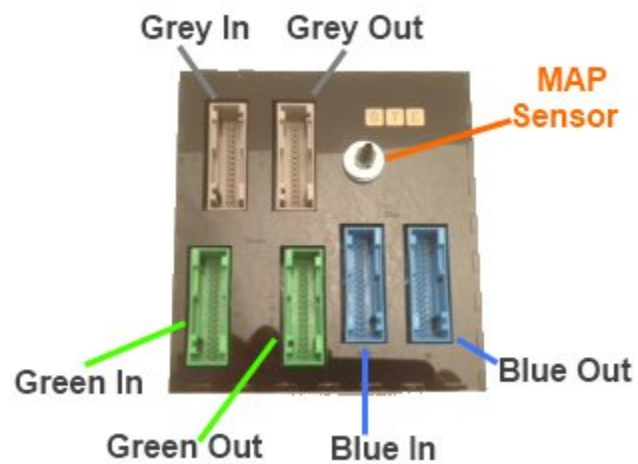
1. 1x PPD Base unit
2. 3x PPD Plug and Play Harnesses
3. 1x USB Type A to Micro Type B cable
4. 1x Analog sensor input pigtail (Position 1 = Wideband sensor input, Position 2 = Auxiliary sensor input).

PPD Connector Layout

(Front View)



Top View



Installation Overview

To install PPD you need to recode your instrument cluster with VAG-COM/VCDS, remove your cluster and lower bolster, remove the Green, Blue, and Grey (GBG) T32 connectors from the rear of your instrument cluster. Those connectors should be moved into the respective GBG input connectors on the base unit. The provided GBG connector harnesses should be connected to the respective output connectors on PPD and the other ends should be connected to the respective color coded connectors on your instrument cluster.

At this point you should start your car to verify that PPD values are being displayed on your cluster. If no data is displayed then please verify proper harness installation. Additionally, configuration of your PPD device to match your cluster firmware version may be necessary (Please see PPD – Connect software video demonstration for detailed steps (www.getste.com))

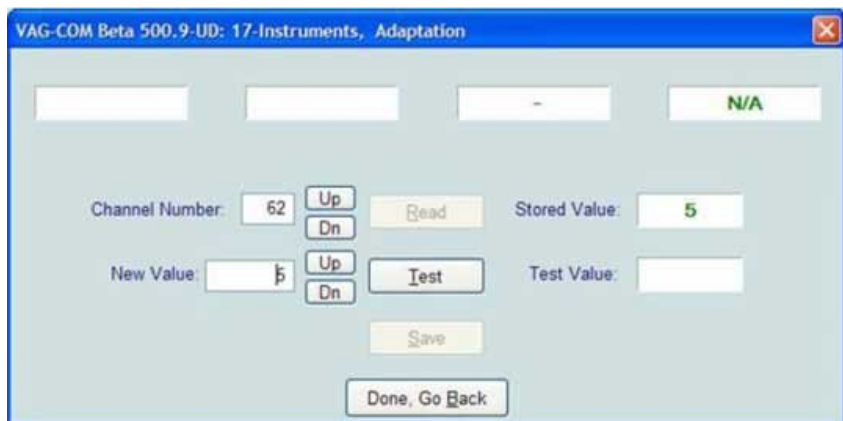
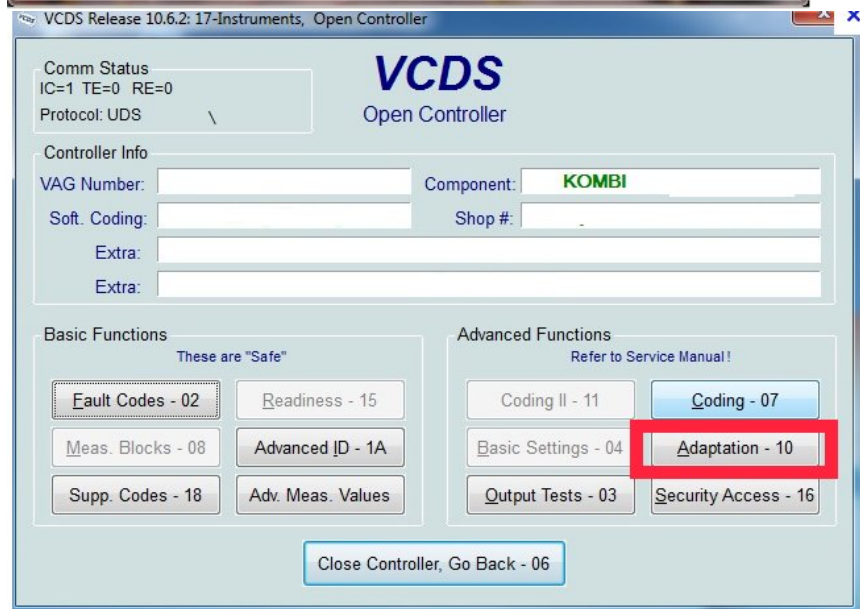
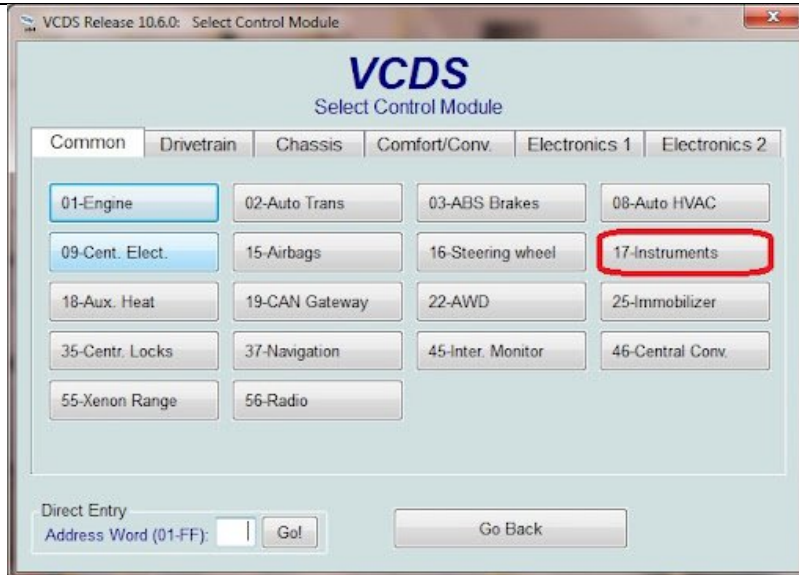
The final step requires that the provided USB cable, vacuum/boost line be connected to the unit's MAP sensor port, and other add-on modules.

STEP-1

Recode Instrument Cluster

Connect VAG-COM cable to diagnostic port→Select Control ->Click Module 17 - Instruments→Click Adaptation→read channel 62, enter value 15 (A4/S4/RS4/A6/RS6) or 7 (Audi TT only), test and then save

PICTURES

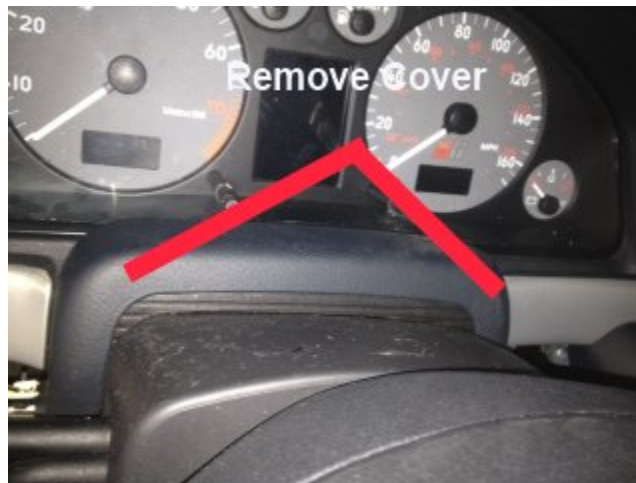


STEP-2

Cluster and bolster removal

Place a thick rag or a piece of cloth on the steering column, remove instrument cluster and lower bolster (kick panel), move cluster harnesses to PPD input ports based on color, and replace cluster harness with provided PPD GBG harnesses (connected to PPD output connectors)

Typical install location for PPD is behind the lower bolster below the instrument cluster. The OEM harness and provided harness are just long enough for fitment in that location, but will require exact placement during installation.

**PICTURES
Remove cluster****Bolster removed**

(Important note:)

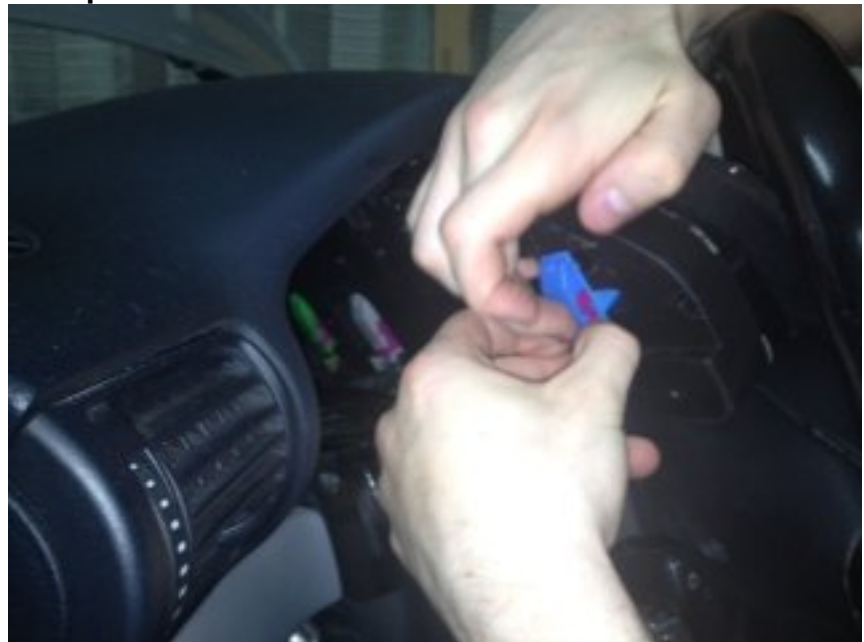
Prior to final installation please connect the provided USB cable and secure the USB cable above the fuse panel on the left side. You will not have direct access to the USB port after installation so it is important that this cable is easily reached. You will need it for device configuration (Shift RPM, Cluster type config, Boost control maps, Firmware updates, Data log retrieval, etc)



USB cable tucked away for future use



Unclip connectors from cluster



Cluster and Bolster removed



Connectors from cluster routed to PPD install location



PPD with input harnesses inserted and being placed

into final install location behind bolster



STEP 3 (Optional: Boost Control Add-On)

The boost control add-on module should be placed in the engine bay within reach of the N75 solenoid valve.

The module has 3 ports and is shipped with 3 plug and play harnesses.

PPD has 3 driver switchable boost maps. The maps are specified using duty cycle Vs. RPM. The maps are programmed using **PPD Connect, via USB connection (Please see demonstration video of PPD Connect on the website).**

PICTURES



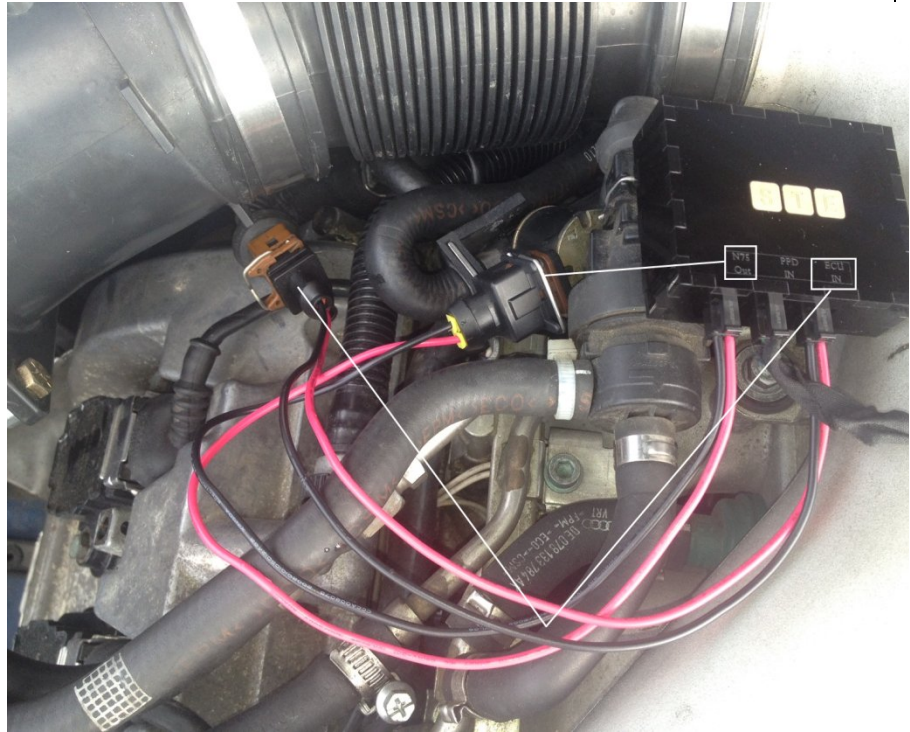
(Connector layout from left to right)

N75 out - > This connector should be connected to the N75 Valve

PPD IN -> Goes from the N75 port on the PPD base unit under the bolster to the boost control add-on in the engine bay

ECU IN -> This male connector goes into the OEM N75 female connector.

Picture 2



1. MAP sensor calibration

With the car off, put the key into the ignition and turn the key into the ACC position (1 click, but do not start the car). After 10 seconds you will hear a loud beep. The beep indicates completion of the calibration.

2. Mode cycling

The menu stalk allows you to switch between the various modes on PPD. Pressing the up button cycles through the display modes (Boost, AFR, Performance monitor, etc). Pressing the down button cycles through the boost control maps

3. Establish connection with PPD Connect

Connect provided USB cable to laptop computer and wait for the device to be detected by your car. Please do not place your car key into the ignition; doing so will disrupt the connection.

Please do not start the car until the USB cable has been removed from the computer.